

BLOCK NO. 14
街区計算

街区略図

工区

3

ブロック 14

記入者



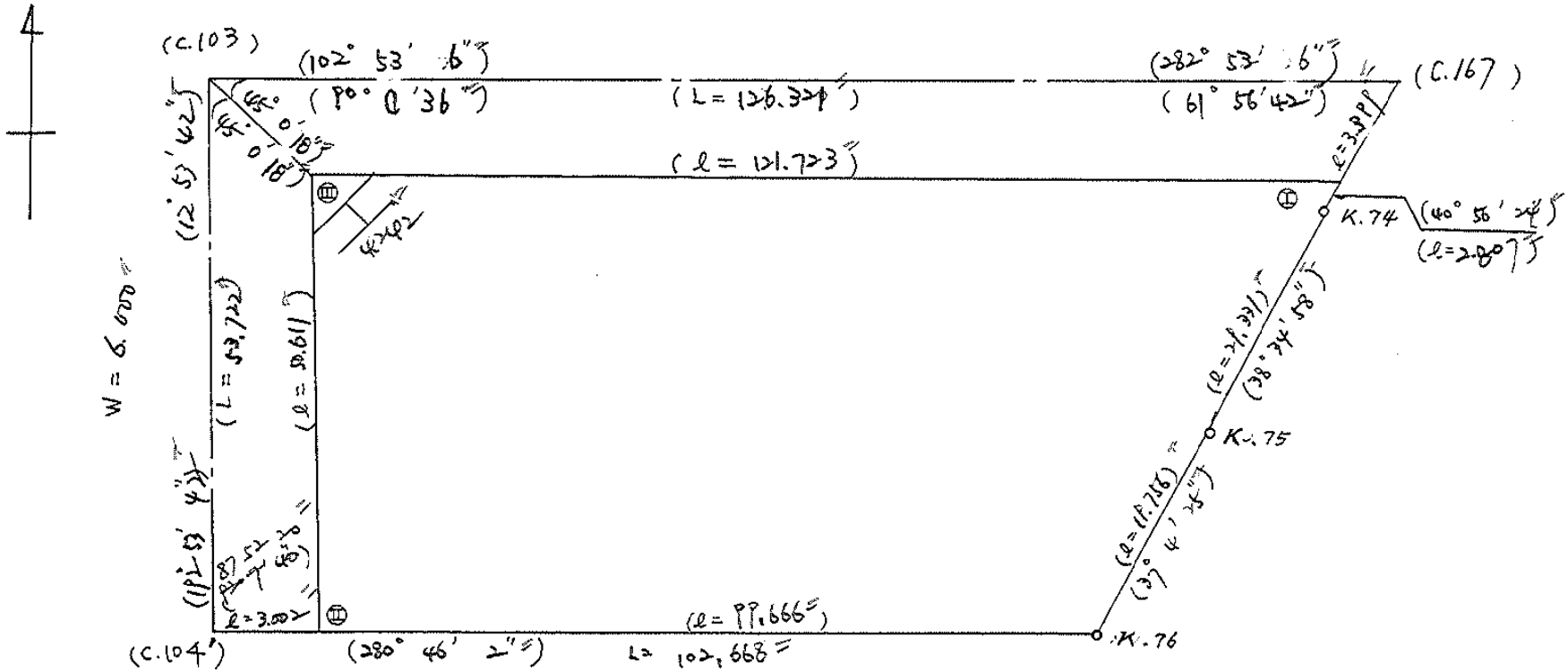
点検者



$$\begin{aligned} X &= -152,804.710'' \\ Y &= -37,108.388'' \end{aligned}$$

$$\begin{aligned} X &= -152,832.879'' \\ Y &= -36,985.248'' \end{aligned}$$

$$W = 6.000''$$

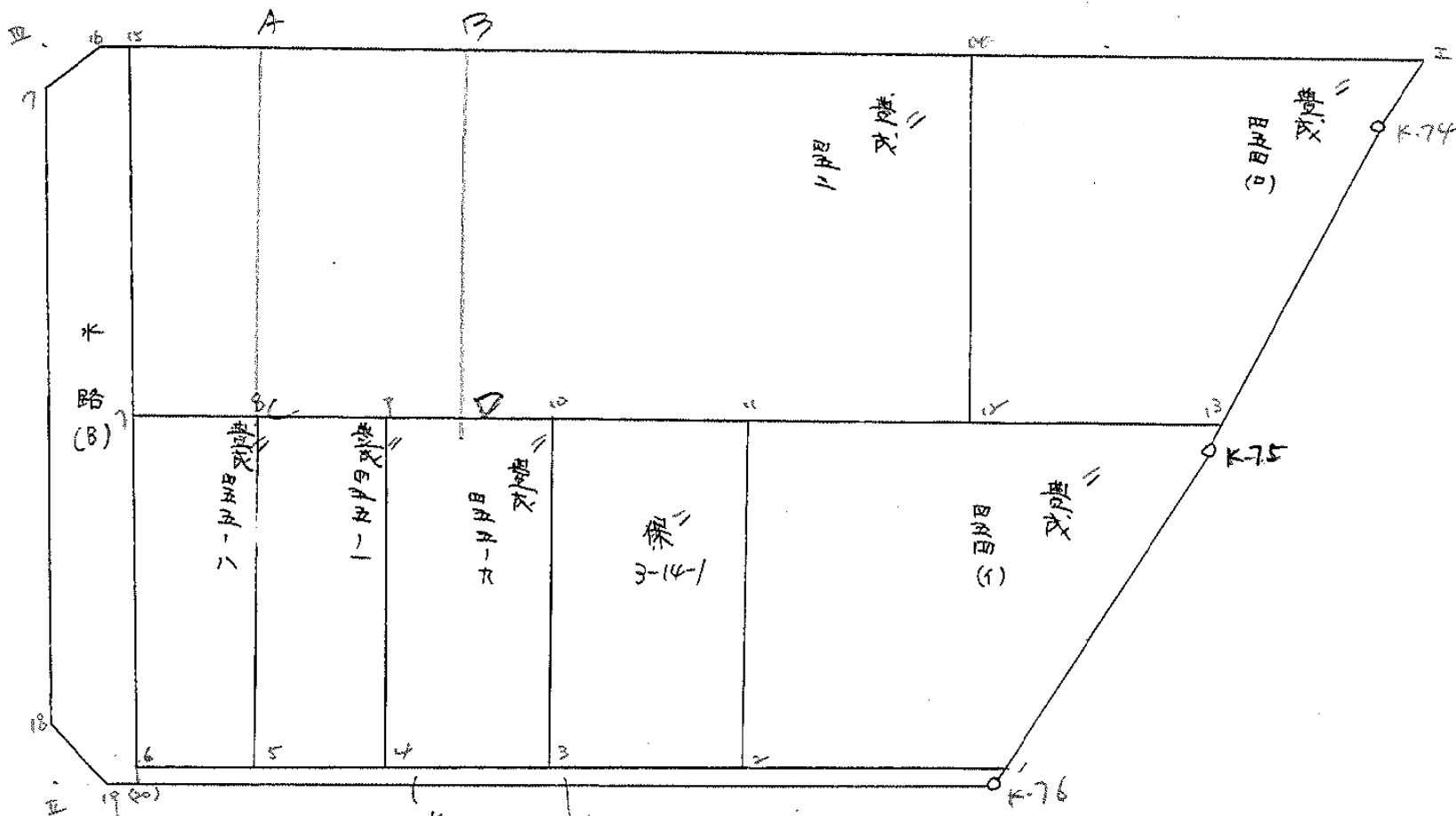


$$\begin{aligned} X &= -152,857.077'' \\ Y &= -37,120.377'' \end{aligned}$$

$$W =$$

面地計算

312 BNO. 14



水路(A)

区公署路39号记录
与字

面積計算書

工区

23

ブロック

14

計算者

田中

精算者

田中

備考

豊成 453

点	①	②	③	④	⑤	⑥	③	×	⑤	②	×	⑥
	X	X-(定数)	X _{n-1} -X _{n+1}	Y	Y-(定数)	Y _{n-1} -Y _{n+1}	+		-	+		-
15	152,809.195	-152,800 9.195	-4.462	-37,102.234	-37,010 92.234	-88.141	411.548108			810.456495		
14	152,828.132	28.132	+42.326	37,019.460	9.450	-77.427		399.980700		2178.176364		
12	152,851.521	51.521	+4.462	37,226.807	14.807	+88.141		66.068834		4541.112461		
7	152,832.594	32.594	-42.326	37,107.591	97.591	+77.427	4130.636666			2523.654638		
							4542.184774	466.049534	2928.632859	7064.768099		
							4076.135240			4076.135240		
									1/2 =	2038.067620		

面積計算書

工区

3

ブロック

14

計算者

天野

精算者

天野

備考

豊成

454 (A)

454 (B)

点	①	②	③	④	⑤	⑥	③ × ⑤		② × ⑥	
	X	X-(定数)	X _{n-1} -X _{n+1}	Y	Y-(定数)	Y _{n-1} -Y _{n+1}	+	-	+	-
	-152.	-152.840		-37.	-37.000					
13	856.232	16.232	+ 13.901	004.205	4.205	- 38.751		58.453705	629.006232	
1475	860.495	20.495	+ 19.580	007.106	7.606	+ 14.974		147.925480		306.892130
1	875.812	35.812	+ 9.147	019.179	19.179	+ 44.018		175.430313		1576.372616
2	869.642	29.642	- 29.218	051.624	51.624	+ 27.178	1508.350032			805.610276
11	846.594	6.594	- 13.410	046.357	46.357	- 47.419	621.647370		312.680886	
							2129.997402	382.809498	946.687118	2658.875022
							1747.187904			1747.187904
								1/2 = 873.593952		
I	-152.	-152.800		-36	-36.900					
	835.447	35.447	+ 9.635	987.475	87.475	- 30.136		825.326625	1068.230792	
1474	837.567	37.567	+ 20.785	989.314	89.314	+ 16.730		1956.391490		628.495910
13	856.232	56.232	+ 13.954	004.205	104.205	+ 35.493		1454.076570		1995.842376
12	851.521	51.521	- 28.100	024.807	124.807	+ 15.245	3507.076700			785.427645
14	828.132	28.132	- 16.074	019.450	119.450	- 37.332	1920.039300		1050.223824	
							5427.116000	4135.794685	12118.454616	3609.775931
							1291.321315			1291.321315
								1/2 = 645.6606575		

面積計算書

工
区

3

ブ
ロ
ック

14

計
算
者



精
算
者



備
考

大保 3-14-1
豊成 455-9

点	①	②	③	④	⑤	⑥	③ × ⑤		② × ⑥	
	X	X-(定数)	X _{n-1} -X _{n-1}	Y	Y-(定数)	Y _{n-1} -Y _{n+1}	+	-	+	-
	-152.	-152.840		-37.	-37.060					
11	844.594	6.594	+ 27.506	046.357	6.357	- 14.235		174.855642	93.865590	
2	869.642	29.642	+ 19.307	051.624	11.624	+ 24.940		224.424568	739.271480	
3	865.901	25.901	- 27.506	071.297	31.297	+ 14.235	860.855282		368.700735	
10	842.136	2.136	- 19.307	065.859	25.859	- 24.940	499.259713		53.271840	
							1360.114995	399.280210	147.137430	1107.972215
							960.834785		960.834785	
								1/2=480.4173925		
10	-152.	-152.830		37.	-37.060					
	842.136	12.136	+ 26.165	065.859	5.859	- 5.057		153.300735	61.371752	
3	865.901	35.901	+ 21.752	071.297	11.297	+ 16.021		245.732344	575.169921	
4	863.888	33.888	- 26.165	081.880	21.880	+ 5.057	572.490200		171.371616	
9	839.736	9.736	- 21.752	076.354	16.354	- 16.021	355.732208		155.980456	
							928.222408	399.033079	217.352208	746.541537
							529.189329		529.189329	
								1/2=264.5946645		

面積計算書

工区

3

ブロック

14

計算者



精算者



備考

平成

455-1
455-8

点	①	②	③	④	⑤	⑥	③ × ⑤		② × ⑥	
	X	X-(定数)	X _{n-1} -X _{n+1}	Y	Y-(定数)	Y _{n-1} -Y _{n+1}	+	-	+	-
9	-152. 837.736	-152.830 9.736	+27.849	-37. 076.354	-37.070 6.354	-10.644		176.952546		103.629984
4	863.888	33.888	+21.051	081.880	11.880	+21.834		250.985880		739.910592
5	860.787	30.787	-27.849	098.188	28.188	+10.644	785.007612			327.696828
8	836.039	6.039	-21.051	092.524	22.524	-21.834	474.152724		131.855426	
							1259.160336	427.038426	235.485510	1067.607420
							832.121910			232.121910
								1/2=416.060955		
8	-152. 836.039	-152.830 6.039	+28.193	-37. 092.524	-37.090 2.524	-9.403		71.159132		56.784717
5	860.787	30.787	+21.859	098.188	8.188	+20.849		178.981492		642.186033
6	857.898	27.898	-28.193	113.383	23.383	+9.403	659.236919			262.324894
7	832.594	2.594	-21.859	107.591	17.591	-20.849	384.521669		54.108746	
							1043.758588	250.140624	110.892963	904.510927
							793.617964			793.617964
								1/2=396.808982		

面積計算書

工区

3

ブロック

14

計算者

田家

精算者

吉

備考

水路

(A)

(B)

点	①	②	③	④	⑤	⑥	③ × ⑤		② × ⑥	
	X	X-(定数)	X _{n-1} -X _{n+1}	Y	Y-(定数)	Y _{n-1} -Y _{n+1}	+	-	+	-
1	-152,875.812	-152,875	+18.360	-37,019.179	-37,010	-93.867				
K.76	-152,876.258	-152,876	-17.426	-37,019.416	9.516	+94.316	168,526.440		2422.895004	
20	-152,858.386	-152,858	-18.360	-37,113.495	103.495	+93.867	165,825.816			2476.549528
6	-152,857.898	-152,857	+17.426	-37,113.383	103.383	-94.316		1801.52158		787.168662
							2065.994016	1970.078598		3187.202772
							95.915418			95.915418
								1/2	47.957709	
15	-152,809.195	-152,800	+49.414	-37,102.234	-37,100	+10.287				
20	-152,858.386	-152,858	+49.003	-37,113.495	13.495	+12.247	110.390876			94.588965
19	-152,858.198	-152,858	-3.673	-37,114.481	14.481	+3.263	661.295485			715.053342
18	-152,854.713	-152,854	-46.971	-37,116.758	16.758	-7.679	43.188713			189.900076
17	-152,811.227	-152,811	-45.741	-37,106.802	6.802	-13.550	787.140018		420.141127	
16	-152,808.972	-152,808	-2.032	-37,103.208	3.208	-4.568	661.295485		150.125850	
							6.518656		40.984096	
							1157.977669	771.626361	613.251073	999.542381
							386.291305			386.291305
								1/2	193.145654	

面積計算書

Ⅰ
区

3

ブロック

14

計算者

(印)

精算者

(印)

備考

入切

Ⅱ
Ⅲ

点	①	②	③	④	⑤	⑥	③ × ⑤		② × ⑥	
	X	X-(定数)	X _{n-1} -X _{n+1}	Y	Y-(定数)	Y _{n-1} -Y _{n+1}	+	-	+	-
19	-152,858.198	-152,850 8.198 =	+2.925 =	-37,114.481	-37,110 4.481 =	+0.670 =		13.106925 =		5.492660 =
Ⅱ	-152,857.638	7.638 =	-3.485 =	-37,117.428	7.428 =	+2.277 =	25.886580 =			17.391726 =
18	-152,854.713	4.71375 =	0.560 =	-37,116.782	6.782 =	-2.947 =		3.284480 =	13.889211 =	
							25.886580 =	16.891405 =	13.889211 =	22.884386 =
							8.995175 =			8.995175 =
									1/2 =	4.4975875 =
17	-152,811.227	-152,800 11.227 =	-0.669 =	-37,106.802	-37,103 3.802 =	+2.925 =	2.543538 =			32.838995 =
Ⅲ	-152,808.303	8.303 =	-2.255 =	-37,106.133	3.133 =	-3.594 =	7.064915 =			29.840982 =
16	-152,808.972	8.972 =	2.924 =	-37,103.208	0.208 =	+0.669 =		0.608192 =		6.002268 =
							9.608453 =	0.608192 =	29.840982 =	38.841243 =
							9.000261 =			9.000261 =
									1/2 =	4.5001305 =

計年月日
算日

計算者



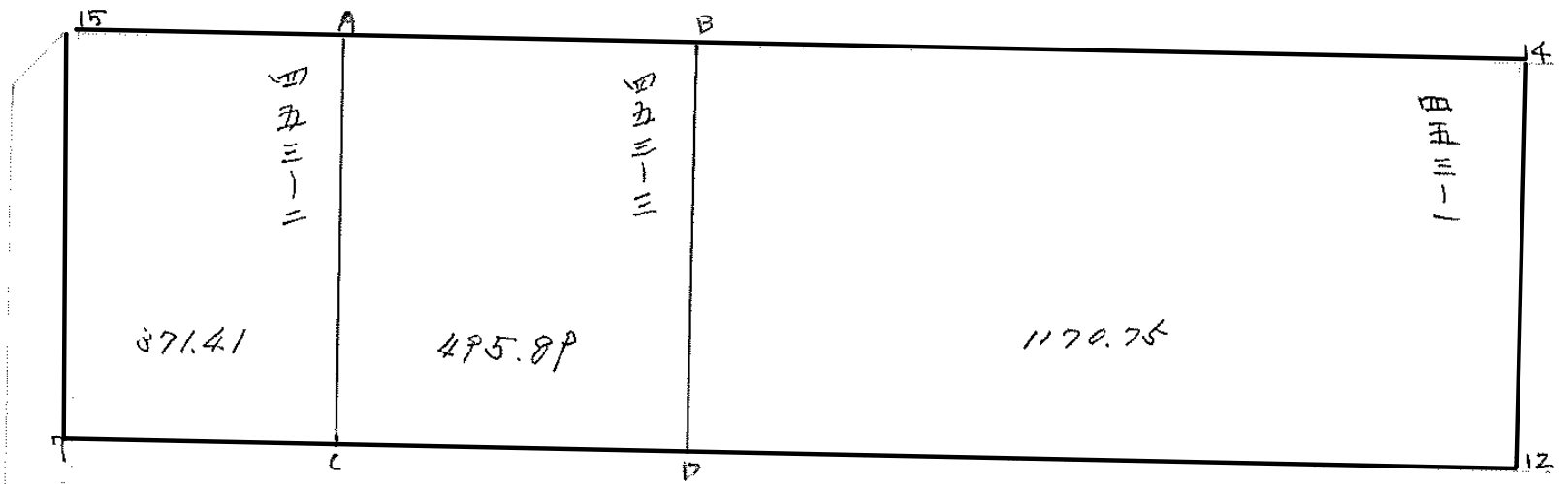
検査者



B.NO. 14

各筆面積計算書

地番	算式	隅切	地積	摘要
	豊成 453 =		2038.06	
	豊成 454 (0) =		645.66	
	豊成 454 (1) =		873.59	
	養保 3-14-1		480.41	
	豊成 45509 =		264.59	
	豊成 45501 =		416.06	
	豊成 45508 =		396.80	
	水路 A 区西衛路39号物1 =		47.95	
	水路 B =		193.14	
	計		5356.26	
	全体		5356.35	
		差	- 0.09	
	損地		4634.76	
	保地		480.41	
	水路		193.14	
	区西衛路39号物1		47.95	



面積計算書

工区

3

ブロック

14

計算者

精算者

備考

豊 453-1

点	①	②	③	④	⑤	⑥	③ × ⑤		② × ⑥	
	X	X - (定数)	X _{n-1} - X _{n+1}	Y	Y - (定数)	Y _{n-1} - Y _{n+1}	+	-	+	-
B	-152 817.253	(-152810) 7.253	+ 12.516	-37 067.010	(-37010) 57.010	+ 52.915	713.537160		383.992495	
14	828.132	18.132	- 34.268	019.450	9.450	+ 42.203		323.832600	765.224996	
12	851.521	41.521	- 12.516	024.807	14.807	- 52.915		185.324412		2199.083915
D	840.648	30.648	+ 34.268	072.365	62.365	- 42.203	2137.123820			1293.437544
							2850.660980	509.157012	1149.017291	3490.521259
							2341.503958			2341.503958
							× 1/2 = 1170.751979			

面積計算書

工
区

3

ブ
ロ
ック

14

計
算
者

精
算
者

備
考

豊 453-2

点	①	②	③	④	⑤	⑥	③ × ⑤		② × ⑥	
	X	X - (定数)	X _{n-1} - X _{n+1}	Y	Y - (定数)	Y _{n-1} - Y _{n+1}	+	-	+	-
15	152. 209.195	(-152800) 9.195	+ 19.949	102.234	(-37080) 22.234	+ 20.440	442.546066		187.945800	
A	812.645	12.645	- 26.848	087.151	7.151	+ 9.728		191.990048	123.010560	
C	836.043	36.043	- 19.949	092.506	12.506	- 20.440		249.482194		736.718920
7	832.594	32.594	+ 26.848	107.591	27.591	- 9.728	740.763168			319.074432
							1184.309234	441.492242	310.956360	1053.793352
							742.836992			742.836992
							× 1/2 = 371.418496			

面積計算書

工区

3

ブロック

14

計算者

精算者

備考

453-3

点	①	②	③	④	⑤	⑥	③ × ⑤		② × ⑥	
	X	X - (定数)	X _{n-1} - X _{n+1}	Y	Y - (定数)	Y _{n-1} - Y _{n+1}	+	-	+	-
A	-152. 812.645	(-152810) 2.645	+ 18.790	37. 087.151	(-37060) 27.151	+ 25.496	510.167290			67.426920
B	817.253	2.253	- 28.003	067.010	7.010	+ 14.786		196.301070		107.242858
D	840.648	30.648	- 18.790	072.365	12.365	- 25.496		232.338250		781.401408
C	826.043	26.043	+ 28.003	092.506	32.506	- 14.786	910.265518			385.091998
							1420.432808	428.639380	174.679778	1166.478206
							991.993428			991.993428
							× 1/2 = 495.896714			