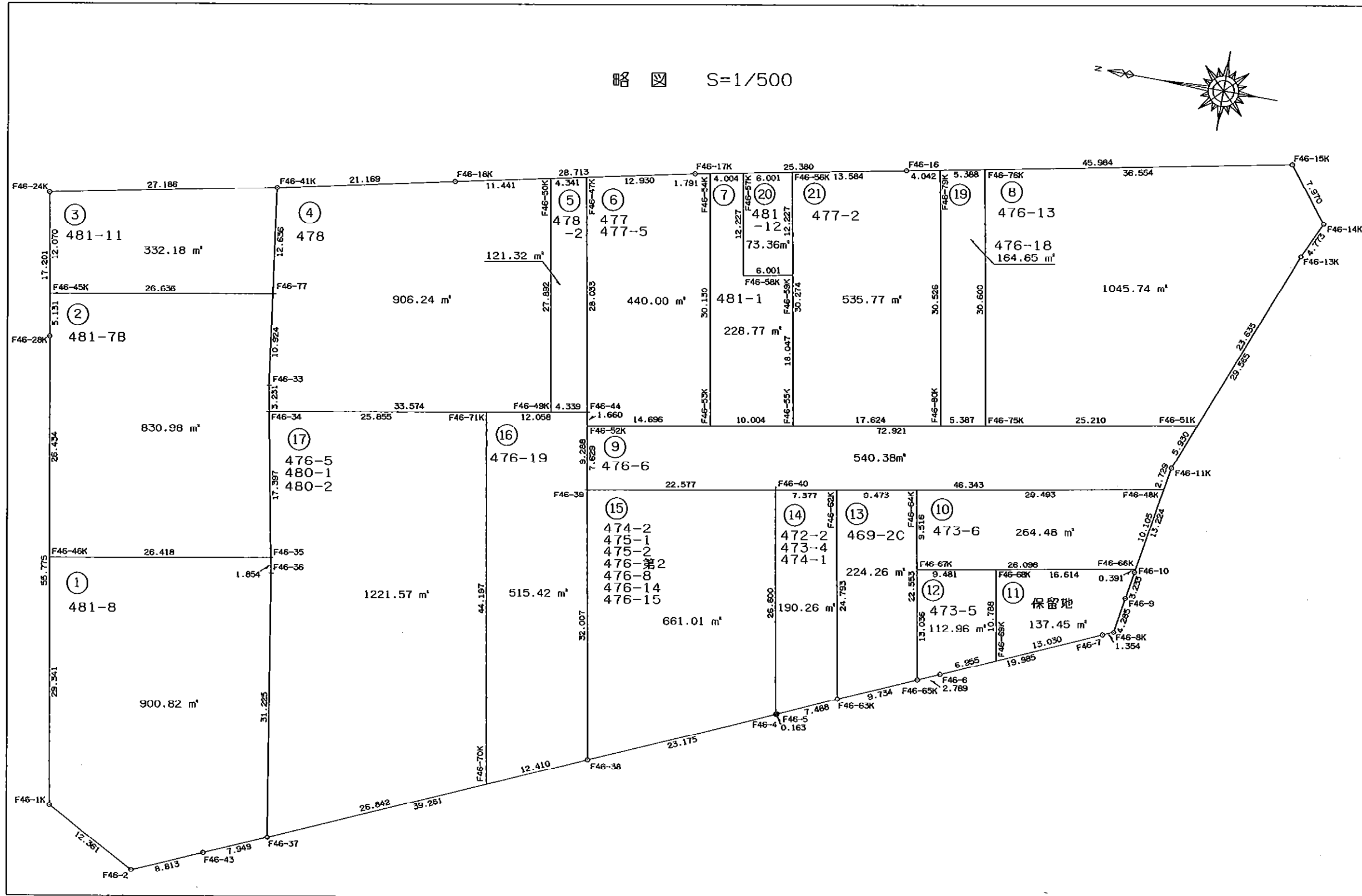
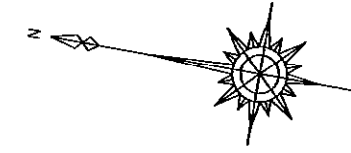


街区番号 (46)

画地原子一覽表

街区面積 9447.750 m²

略図 S=1/500



画地面積成果表

46 街区

| 地番 | 画地名 | 面 m ² 積 | 備考 |
|----|------|--------------------------|----|
| | 1画地 | 900 8242880 | |
| | 2画地 | 830 9867815 | |
| | 3画地 | 332 1842220 | |
| | 4画地 | 906 2440815 | |
| | 5画地 | 121 3273975 | |
| | 6画地 | 440 0045105 | |
| | 7画地 | 228 7725725 | |
| | 8画地 | 1,045 7442265 | |
| | 9画地 | 540 3844895 | |
| | 10画地 | 264 4861415 | |
| | 11画地 | 137 4577605 | |
| | 12画地 | 112 9608120 | |
| | 13画地 | 224 2667705 | |
| | 14画地 | 190 2692390 | |
| | 15画地 | 661 0131200 | |
| | 16画地 | 515 4253630 | |
| | 17画地 | 1,221 5753685 | |
| | 19画地 | 164 6539995 | |
| | 20画地 | 73 3624930 | |
| | 21画地 | 535 7786760 | |
| | 合計 | 9,447 7223130 | |

座 標 面 積 計 算 書

地番 46-1

| 測点 | X | Y | 測角 | 方向角 | 辺長 | X-X | Y(X-X) | 半径 | 曲線長 | 円弧面積 |
|---------|-------------|------------|-----------|-----------|--------|---------|-----------------|----|-----|------|
| F46-1K | -151273.333 | -41037.172 | 128 0 54 | 207 58 0 | 12.361 | -16.036 | 658072.090192 | | | |
| F46-2 | -151284.250 | -41042.968 | 128 22 42 | 156 20 41 | 8.813 | -18.990 | 779405.962320 | | | |
| F46-43 | -151292.323 | -41039.432 | 180 15 34 | 156 36 15 | 7.949 | -15.369 | 630735.030408 | | | |
| F46-37 | -151299.619 | -41036.276 | 104 7 3 | 80 43 18 | 31.225 | -2.261 | 92783.020036 | | | |
| F46-36 | -151294.584 | -41005.459 | 177 58 27 | 78 41 45 | 1.854 | 5.398 | -221347.467682 | | | |
| F46-35 | -151294.221 | -41003.641 | 91 11 16 | 349 53 1 | 26.418 | 26.370 | -1081266.013170 | | | |
| F46-46K | -151268.214 | -41008.281 | 90 4 5 | 259 57 6 | 29.341 | 20.888 | -856580.973528 | | | |
| | | | | | | | 1801.648576 | | | |
| | | | | | | | 900.8242880 | | | |

座 標 面 積 計 算 書

地番 46-2

| 測点 | X | Y | 測角 | 方向角 | 辺長 | X-X | Y(X-X) | 半径 | 曲線長 | 円弧面積 |
|---------|-------------|------------|-----------|----------|--------|---------|-----------------|----|-----|------|
| F46-46K | -151268.214 | -41008.281 | 89 55 55 | 169 53 1 | 26.418 | -30.619 | 1255632.555939 | | | |
| F46-35 | -151294.221 | -41003.641 | 89 24 36 | 79 17 37 | 17.397 | -22.775 | 933857.923775 | | | |
| F46-34 | -151290.989 | -40986.547 | 180 0 37 | 79 18 14 | 3.231 | 3.832 | -157060.448104 | | | |
| F46-33 | -151290.389 | -40983.372 | 182 57 15 | 82 15 28 | 10.924 | 2.071 | -84876.563412 | | | |
| F46-77 | -151288.918 | -40972.547 | 87 40 34 | 349 56 2 | 26.636 | 27.698 | -1134857.606806 | | | |
| F46-45K | -151262.891 | -40977.203 | 89 50 58 | 259 47 0 | 5.131 | 25.316 | -1037378.871148 | | | |
| F46-28K | -151263.602 | -40982.253 | 180 10 6 | 259 57 6 | 26.434 | -5.523 | 226344.983319 | | | |
| | | | | | | | 1661.973563 | | | |
| | | | | | | | 830.9867815 | | | |

座 標 面 積 計 算 書

地番 46-3

| 測点 | X | Y | 測角 | 方向角 | 辺長 | X-X | Y(X-X) | 半径 | 曲線長 | 円弧面積 |
|---------|-------------|------------|----------|-----------|--------|---------|-----------------|----|-----|------|
| F46-45K | -151262.691 | -40977.203 | 90 9 2 | 169 56 2 | 26.636 | -28.367 | 1162400.317501 | | | |
| F46-77 | -151288.918 | -40972.547 | 92 19 23 | 82 15 25 | 12.636 | -24.524 | 1004810.742628 | | | |
| F46-41K | -151287.215 | -40960.027 | 86 30 24 | 348 45 50 | 27.186 | 28.367 | -1161913.085909 | | | |
| F46-24K | -151260.551 | -40965.324 | 91 1 11 | 259 47 0 | 12.070 | 24.524 | -1004633.605776 | | | |
| | | | | | | | 664.368444 | | | |
| | | | | | | | 332.1842220 | | | |

座標面積計算書

地番 46-4

| 測点 | X | Y | 測角 | 方向角 | 辺長 | X-X | Y (X-X) | 半径 | 曲線長 | 円弧面積 |
|---------|-------------|------------|-----------|-----------|--------|---------|-----------------|----|-----|------|
| F46-34 | -151290.989 | -40986.547 | 90 34 32 | 169 52 46 | 33.574 | -33.652 | 1379279.279644 | | | |
| F46-49K | -151324.041 | -40980.647 | 89 55 15 | 79 48 1 | 27.892 | -28.112 | 1152047.948464 | | | |
| F46-50K | -151319.101 | -40953.196 | 88 13 11 | 348 1 12 | 11.441 | 16.132 | -660656.957872 | | | |
| F46-18K | -151307.909 | -40955.571 | 179 49 41 | 347 50 53 | 21.169 | 31.886 | -1305909.336906 | | | |
| F46-41K | -151287.215 | -40960.027 | 94 24 33 | 262 15 25 | 12.636 | 18.991 | -777871.872757 | | | |
| F46-77 | -151288.918 | -40972.547 | 180 0 3 | 262 15 28 | 10.924 | -3.174 | 130046.864178 | | | |
| F46-33 | -151290.389 | -40983.372 | 177 2 45 | 259 18 14 | 3.231 | -2.071 | 84876.563412 | | | |
| | | | | | | | | | | |
| | | | | | | 倍積 | 1812.488163 | | | |
| | | | | | | 面積 | 906.2440815 | | | |

座標面積計算書

地番 46-5

| 測点 | X | Y | 測角 | 方向角 | 辺長 | X-X | Y (X-X) | 半径 | 曲線長 | 円弧面積 |
|---------|-------------|------------|----------|-----------|--------|--------|----------------|----|-----|------|
| F46-49K | -151324.041 | -40980.647 | 90 4 45 | 169 52 46 | 4.339 | -9.211 | 377472.739517 | | | |
| F46-44 | -151328.312 | -40979.885 | 89 55 15 | 79 48 1 | 28.033 | 0.693 | -28399.060305 | | | |
| F46-47K | -151323.348 | -40952.295 | 88 13 11 | 348 1 12 | 4.341 | 9.211 | -377211.589245 | | | |
| F46-50K | -151319.101 | -40953.196 | 91 46 49 | 259 48 1 | 27.892 | -0.693 | 28380.564828 | | | |
| | | | | | | | | | | |
| | | | | | | 倍積 | 242.654795 | | | |
| | | | | | | 面積 | 121.3273975 | | | |

座標面積計算書

地番 46-6

| 測点 | X | Y | 測角 | 方向角 | 辺長 | X-X | Y (X-X) | 半径 | 曲線長 | 円弧面積 |
|---------|-------------|------------|----------|-----------|--------|---------|----------------|----|-----|------|
| F46-52K | -151328.603 | -40981.519 | 89 55 22 | 169 50 36 | 14.696 | -14.756 | 604723.294364 | | | |
| F46-53K | -151343.068 | -40978.927 | 90 0 0 | 79 50 36 | 30.130 | -9.152 | 375039.139904 | | | |
| F46-54K | -151337.755 | -40949.270 | 89 10 24 | 349 0 59 | 1.791 | 7.071 | -289552.288170 | | | |
| F46-17K | -151335.997 | -40949.611 | 179 0 13 | 348 1 12 | 12.930 | 14.407 | -589961.045677 | | | |
| F46-47K | -151323.348 | -40952.295 | 91 46 49 | 259 48 1 | 28.033 | 7.685 | -314718.387075 | | | |
| F46-44 | -151328.312 | -40979.885 | 180 7 12 | 259 55 13 | 1.660 | -5.255 | 215349.295675 | | | |
| | | | | | | | | | | |
| | | | | | | 倍積 | 880.009021 | | | |
| | | | | | | 面積 | 440.0045105 | | | |

座標面積計算書

地番 46-7

| 測点 | X | Y | 測角 | 方向角 | 辺長 | X-X | Y (X-X) | 半径 | 曲線長 | 円弧面積 |
|---------|-------------|------------|-----------|-----------|--------|---------|----------------|------------|-----|-------------|
| F46-53K | -151343.068 | -40978.927 | 90 0 0 | 169 50 36 | 10.004 | -15.160 | 621240.533320 | | | |
| F46-55K | -151352.915 | -40977.163 | 90 0 0 | 79 50 36 | 18.047 | -6.665 | 273112.791395 | | | |
| F46-59K | -151349.733 | -40959.399 | 89 10 24 | 349 0 59 | 6.001 | 9.073 | -371624.627127 | | | |
| F46-58K | -151343.842 | -40960.542 | 270 49 36 | 79 50 36 | 12.227 | 8.047 | -329609.481474 | | | |
| F46-57K | -151341.686 | -40948.507 | 89 10 24 | 349 0 59 | 4.004 | 6.087 | -249253.562109 | | | |
| F46-54K | -151337.755 | -40949.270 | 90 49 36 | 259 50 36 | 30.130 | -1.382 | 56591.891140 | | | |
| | | | | | | | 倍積面積 | 457.545145 | | 228.7725725 |

座標面積計算書

地番 46-8

| 測点 | X | Y | 測角 | 方向角 | 辺長 | X-X | Y (X-X) | 半径 | 曲線長 | 円弧面積 |
|---------|-------------|------------|-----------|-----------|--------|---------|-----------------|-------------|-----|--------------|
| F46-75K | -151375.566 | -40973.105 | 90 0 0 | 169 50 36 | 25.210 | -30.211 | 1237838.475155 | | | |
| F46-51K | -151400.381 | -40968.660 | 121 27 43 | 111 18 18 | 23.635 | -33.402 | 1368435.181320 | | | |
| F46-13K | -151408.968 | -40946.640 | 183 39 1 | 114 57 19 | 4.773 | -10.601 | 434075.330640 | | | |
| F46-14K | -151410.982 | -40942.313 | 116 54 9 | 51 51 27 | 7.970 | 2.909 | -119101.188517 | | | |
| F46-15K | -151406.059 | -40936.045 | 117 11 52 | 349 3 19 | 36.554 | 40.812 | -1670681.868540 | | | |
| F46-76K | -151370.170 | -40942.985 | 90 47 17 | 259 50 36 | 30.600 | 30.493 | -1248474.441605 | | | |
| | | | | | | | 倍積面積 | 2091.488453 | | 1045.7442265 |

座標面積計算書

地番 46-9

| 測点 | X | Y | 測角 | 方向角 | 辺長 | X-X | Y (X-X) | 半径 | 曲線長 | 円弧面積 |
|---------|-------------|------------|-----------|-----------|--------|---------|-----------------|-------------|-----|-------------|
| F46-39 | -151329.938 | -40989.030 | 89 59 59 | 169 55 12 | 22.577 | -23.564 | 965865.502920 | | | |
| F46-40 | -151352.167 | -40985.078 | 179 53 9 | 169 48 21 | 46.343 | -67.840 | 2780427.691520 | | | |
| F46-48K | -151397.778 | -40976.876 | 109 38 52 | 99 27 13 | 2.729 | -46.059 | 1887353.931684 | | | |
| F46-11K | -151398.226 | -40974.184 | 191 51 5 | 111 18 18 | 5.930 | -2.603 | 106655.800952 | | | |
| F46-51K | -151400.381 | -40968.660 | 58 32 17 | 349 50 36 | 72.921 | 69.623 | -2852361.015180 | | | |
| F46-52K | -151328.603 | -40981.519 | 90 4 38 | 259 55 13 | 7.629 | 70.443 | -2886861.142917 | | | |
| | | | | | | | 倍積面積 | 1080.768979 | | 540.3844895 |

座標面積計算書

地番 46-10

| 測点 | X | Y | 測角 | 方向角 | 辺長 | X-X | Y(X-X) | 半径 | 曲線長 | 円弧面積 |
|---------|-------------|------------|-----------|-----------|--------|----------|---------------------------|----|-----|------|
| F46-66K | -151396.118 | -40986.843 | 109 38 52 | 99 27 13 | 10.105 | -27.343 | 1120703.248149 | | | |
| F46-48K | -151397.778 | -40976.876 | 70 21 8 | 349 48 21 | 29.493 | 27.367 | -1121414.165492 | | | |
| F46-64K | -151368.751 | -40982.096 | 90 0 0 | 259 48 21 | 9.516 | 27.343 | -1120573.450928 | | | |
| F46-67K | -151370.435 | -40991.462 | 90 0 0 | 169 48 21 | 26.096 | -27.367 | 1121813.340554 | | | |
| | | | | | | 倍積 面積 | 528.972283 264.4861415 | | | |

座標面積計算書

地番 46-11

| 測点 | X | Y | 測角 | 方向角 | 辺長 | X-X | Y(X-X) | 半径 | 曲線長 | 円弧面積 |
|---------|-------------|------------|-----------|-----------|--------|----------|---------------------------|----|-----|------|
| F46-8K | -151394.861 | -40994.652 | 122 36 4 | 99 3 41 | 4.285 | -1.917 | 78586.747884 | | | |
| F46-9 | -151395.536 | -40990.420 | 180 10 5 | 99 13 46 | 3.233 | -1.193 | 48901.571060 | | | |
| F46-10 | -151396.054 | -40987.229 | 180 13 27 | 99 27 13 | 0.391 | -0.582 | 23854.567278 | | | |
| F46-66K | -151396.118 | -40986.843 | 70 21 8 | 349 48 21 | 16.614 | 16.288 | -667593.698784 | | | |
| F46-68K | -151379.766 | -40989.784 | 90 0 0 | 259 48 21 | 10.788 | 14.442 | -591974.460528 | | | |
| F46-69K | -151381.676 | -41000.402 | 76 37 49 | 156 26 10 | 13.030 | -13.853 | 567978.568906 | | | |
| F46-7 | -151393.619 | -40995.193 | 180 1 28 | 156 27 37 | 1.354 | -13.185 | 540521.619705 | | | |
| | | | | | | 倍積 面積 | 274.915521 137.4577605 | | | |

座標面積計算書

地番 46-12

| 測点 | X | Y | 測角 | 方向角 | 辺長 | X-X | Y(X-X) | 半径 | 曲線長 | 円弧面積 |
|---------|-------------|------------|-----------|-----------|--------|----------|---------------------------|----|-----|------|
| F46-68K | -151379.766 | -40989.784 | 90 0 0 | 349 48 21 | 9.481 | 11.241 | -460766.161944 | | | |
| F46-67K | -151370.435 | -40991.462 | 90 0 0 | 259 48 21 | 13.036 | 7.024 | -287924.029088 | | | |
| F46-65K | -151372.742 | -41004.293 | 76 44 6 | 156 32 27 | 2.789 | -4.866 | 199526.889738 | | | |
| F46-6 | -151375.301 | -41003.182 | 179 53 42 | 156 26 10 | 6.955 | -8.934 | 366322.427988 | | | |
| F46-69K | -151381.676 | -41000.402 | 103 22 11 | 79 48 21 | 10.788 | -4.465 | 183066.794930 | | | |
| | | | | | | 倍積 面積 | 225.921624 112.9608120 | | | |

座標面積計算書

地番 46-13

| 測点 | X | Y | 測角 | 方向角 | 辺長 | X-X | Y(X-X) | 半径 | 曲線長 | 円弧面積 |
|---------|-------------|------------|-----------|-----------|--------|---------|---------------------------|----|-----|------|
| F46-64K | -151368.751 | -40982.096 | 90 0 0 | 349 48 21 | 9.473 | 13.315 | -545676.608240 | | | |
| F46-62K | -151359.427 | -40983.772 | 90 0 0 | 259 48 21 | 24.793 | 4.936 | -202295.898592 | | | |
| F46-63K | -151363.815 | -41008.175 | 76 41 30 | 156 29 51 | 9.734 | -13.315 | 546023.850125 | | | |
| F46-65K | -151372.742 | -41004.293 | 103 18 30 | 79 48 21 | 22.553 | -4.936 | 202397.190248 | | | |
| | | | | | | | | | | |
| | | | | | | 倍積面積 | 448.533541 224.2667705 | | | |

座標面積計算書

地番 46-14

| 測点 | X | Y | 測角 | 方向角 | 辺長 | X-X | Y(X-X) | 半径 | 曲線長 | 円弧面積 |
|---------|-------------|------------|----------|-----------|--------|--------|---------------------------|----|-----|------|
| F46-62K | -151359.427 | -40983.772 | 90 0 0 | 349 48 21 | 7.377 | 11.648 | -477378.976256 | | | |
| F46-40 | -151352.167 | -40985.078 | 90 7 30 | 259 55 51 | 26.600 | 2.610 | -106971.053580 | | | |
| F46-4 | -151356.817 | -41011.268 | 75 14 20 | 155 10 11 | 0.163 | -4.798 | 196772.063864 | | | |
| F46-5 | -151356.965 | -41011.200 | 181 0 5 | 156 10 15 | 7.488 | -6.898 | 286996.377600 | | | |
| F46-63K | -151363.815 | -41008.175 | 103 38 6 | 79 48 21 | 24.793 | -2.462 | 100982.126850 | | | |
| | | | | | | | | | | |
| | | | | | | 倍積面積 | 380.538478 190.2692390 | | | |

座標面積計算書

地番 46-15

| 測点 | X | Y | 測角 | 方向角 | 辺長 | X-X | Y(X-X) | 半径 | 曲線長 | 円弧面積 |
|--------|-------------|------------|-----------|-----------|--------|---------|----------------------------|----|-----|------|
| F46-38 | -151335.576 | -41020.536 | 76 34 22 | 156 25 38 | 23.175 | -26.879 | 1102590.987144 | | | |
| F46-4 | -151356.817 | -41011.268 | 103 30 13 | 79 55 51 | 26.600 | -16.591 | 680417.947388 | | | |
| F46-40 | -151352.167 | -40985.078 | 89 59 21 | 349 55 12 | 22.577 | 26.879 | -1101637.911562 | | | |
| F46-39 | -151329.938 | -40989.030 | 89 56 4 | 259 51 15 | 32.007 | 16.591 | -680048.996730 | | | |
| | | | | | | | | | | |
| | | | | | | 倍積面積 | 1322.026240 661.0131200 | | | |

座標面積計算書

地番 46-16

| 測点 | X | Y | 緯距 | 経距 | 測角 | 方向角 | 辺長 | X-X | Y(X-X) | 半径 | 曲線長 | 円弧面積 |
|---------|-------------|------------|---------|---------|-----------|-----------|--------|---------|----------------|----|-----|------|
| F46-70K | -151324.208 | -41025.513 | -11.368 | 4.977 | 76 28 50 | 156 21 35 | 12.410 | -19.134 | 784982.165742 | | | |
| F46-38 | -151335.576 | -41020.536 | 5.638 | 31.506 | 103 29 40 | 79 51 15 | 32.007 | -5.730 | 235047.671280 | | | |
| F46-39 | -151329.938 | -40989.030 | 1.626 | 9.145 | 180 3 58 | 79 55 13 | 9.288 | 7.264 | -297744.313920 | | | |
| F46-44 | -151328.312 | -40979.885 | 11.870 | -2.119 | 89 57 33 | 349 52 46 | 12.058 | 13.496 | -553064.527960 | | | |
| F46-71K | -151316.442 | -40982.004 | -7.766 | -43.509 | 90 0 0 | 259 52 46 | 44.197 | 4.104 | -168190.144416 | | | |
| | | | | | | | | 倍積 | 1030.850726 | | | |
| | | | | | | | | 面積 | 515.4253630 | | | |

座標面積計算書

地番 46-17

| 測点 | X | Y | 緯距 | 経距 | 測角 | 方向角 | 辺長 | X-X | Y(X-X) | 半径 | 曲線長 | 円弧面積 |
|---------|-------------|------------|---------|---------|-----------|-----------|--------|---------|-----------------|----|-----|------|
| F46-71K | -151316.442 | -40982.004 | 25.453 | -4.543 | 90 0 0 | 349 52 46 | 25.855 | 33.219 | -1361381.190876 | | | |
| F46-34 | -151290.989 | -40986.547 | -3.232 | -17.094 | 89 24 51 | 259 17 37 | 17.397 | 22.221 | -910762.060887 | | | |
| F46-35 | -151294.221 | -41003.641 | -0.363 | -1.818 | 179 24 8 | 258 41 45 | 1.854 | -3.595 | 147408.089395 | | | |
| F46-36 | -151294.584 | -41005.459 | -5.035 | -30.817 | 182 1 33 | 260 43 18 | 31.225 | -5.398 | 221347.467682 | | | |
| F46-37 | -151299.619 | -41036.276 | -24.589 | 10.763 | 75 38 17 | 156 21 35 | 26.842 | -29.624 | 1215658.640224 | | | |
| F46-70K | -151324.208 | -41025.513 | 7.766 | 43.509 | 103 31 10 | 79 52 46 | 44.197 | -16.823 | 690172.205199 | | | |
| | | | | | | | | 倍積 | 2443.150737 | | | |
| | | | | | | | | 面積 | 1221.5753685 | | | |

座標面積計算書

地番 46-19

| 測点 | X | Y | 緯距 | 経距 | 測角 | 方向角 | 辺長 | X-X | Y(X-X) | 半径 | 曲線長 | 円弧面積 |
|---------|-------------|------------|--------|---------|----------|-----------|--------|---------|----------------|----|-----|------|
| F46-80K | -151370.263 | -40974.055 | -5.303 | 0.950 | 90 0 0 | 169 50 36 | 5.387 | -10.686 | 437848.751730 | | | |
| F46-75K | -151375.566 | -40973.105 | 5.396 | 30.120 | 90 0 0 | 79 50 36 | 30.600 | 0.093 | -3810.498765 | | | |
| F46-76K | -151370.170 | -40942.985 | 5.290 | -1.023 | 89 12 43 | 349 3 19 | 5.388 | 10.686 | -437516.737710 | | | |
| F46-79K | -151364.880 | -40944.008 | -5.383 | -30.047 | 90 47 17 | 259 50 36 | 30.526 | -0.093 | 3807.792744 | | | |
| | | | | | | | | 倍積 | 329.307999 | | | |
| | | | | | | | | 面積 | 164.6539995 | | | |

座 標 面 積 計 算 書

地番 46-20

| 測点 | X | Y | 緯距 | 經距 | 測角 | 方向角 | 辺長 | X-X | Y(X-X) | 半径 | 曲線長 | 円弧面積 |
|---------|-------------|------------|--------|---------|----------|-----------|--------|--------|----------------|----|-----|------|
| F46-59K | -151349.733 | -40959.399 | 2.156 | 12.035 | 90 49 36 | 79 50 36 | 12.227 | -3.735 | 152983.355265 | | | |
| F46-56K | -151347.577 | -40947.364 | 5.891 | -1.143 | 89 10 24 | 349 0 59 | 6.001 | 8.047 | -329503.438108 | | | |
| F46-57K | -151341.686 | -40948.507 | -2.156 | -12.035 | 90 49 36 | 259 50 36 | 12.227 | 3.735 | -152942.673645 | | | |
| F46-58K | -151343.842 | -40960.542 | -5.891 | 1.143 | 89 10 24 | 169 0 59 | 6.001 | -8.047 | 329609.481474 | | | |
| | | | | | | | | 倍積 | 146.724986 | | | |
| | | | | | | | | 面積 | 73.3624930 | | | |

座 標 面 積 計 算 書

地番 46-21

| 測点 | X | Y | 緯距 | 經距 | 測角 | 方向角 | 辺長 | X-X | Y(X-X) | 半径 | 曲線長 | 円弧面積 |
|---------|-------------|------------|---------|---------|-----------|-----------|--------|---------|----------------|----|-----|------|
| F46-16 | -151360.912 | -40944.775 | 13.335 | -2.589 | 179 57 41 | 349 0 59 | 13.584 | 17.303 | -708467.441825 | | | |
| F46-56K | -151347.577 | -40947.364 | -5.338 | -29.799 | 90 49 36 | 259 50 36 | 30.274 | 7.997 | -327456.069908 | | | |
| F46-55K | -151352.915 | -40977.163 | -17.348 | 3.108 | 90 0 0 | 169 50 36 | 17.624 | -22.686 | 929607.919818 | | | |
| F46-80K | -151370.263 | -40974.055 | 5.383 | 30.047 | 90 0 0 | 79 50 36 | 30.526 | -11.965 | 490254.568075 | | | |
| F46-79K | -151364.880 | -40944.008 | 3.968 | -0.767 | 89 12 43 | 349 3 19 | 4.042 | 9.351 | -382867.418808 | | | |
| | | | | | | | | 倍積 | 1071.557352 | | | |
| | | | | | | | | 面積 | 535.7786760 | | | |